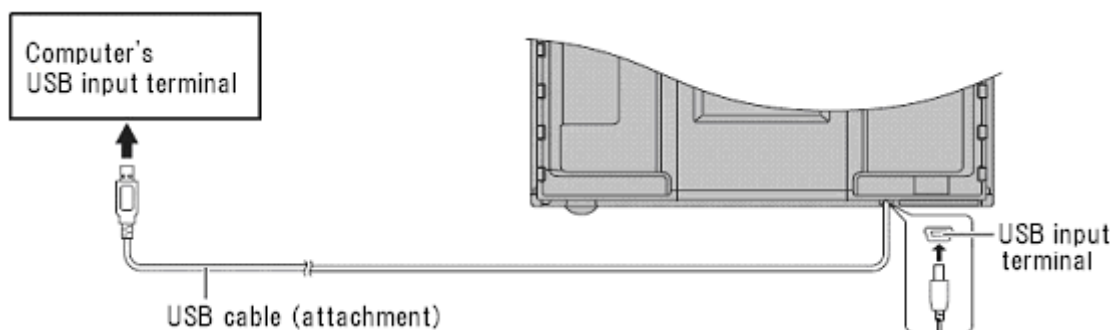
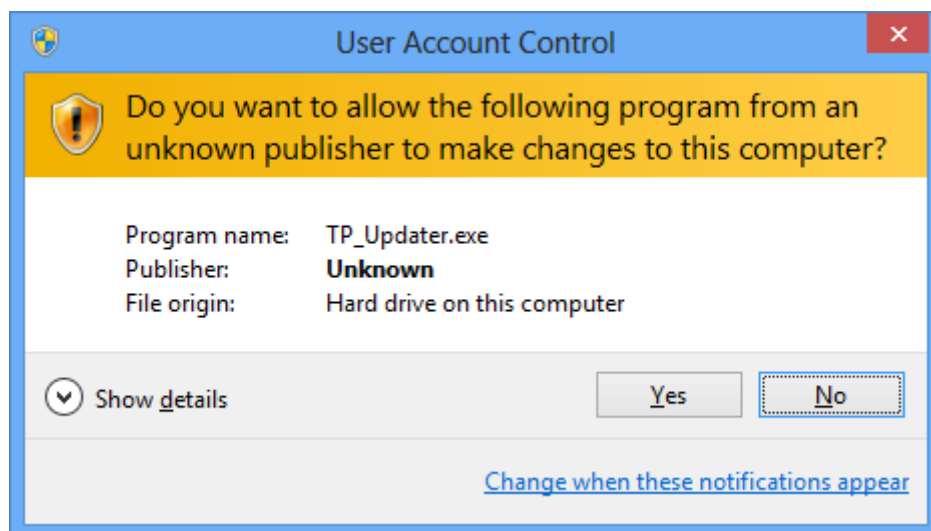


PN-L602B Updating Procedure of Touch Panel Firmware

1. Connect USB cable of touch panel to computer.
Touch panel is recognized automatically when it's connected.
*Updating firmware is available if the display is powered off.

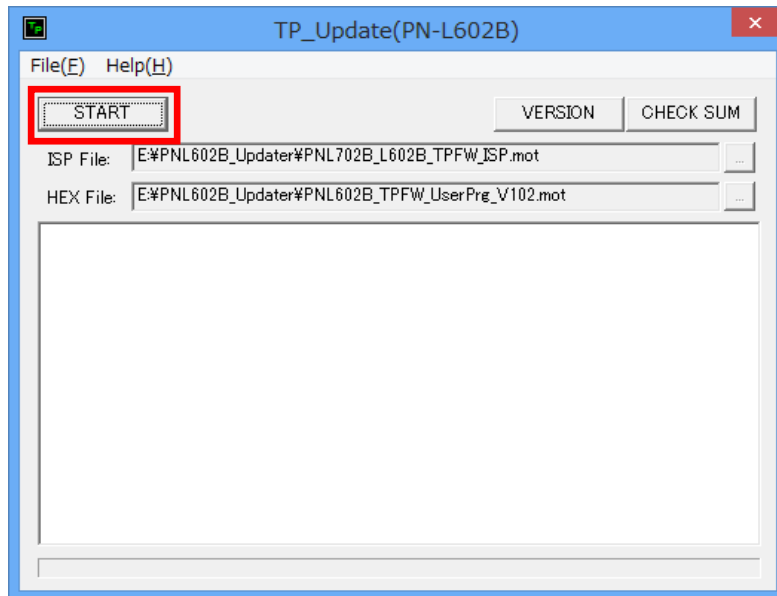


2. Double click the updating tool (TP_Updater.exe) in a opened folder.
The updating tool will be started when you click [YES] in [User Account Control] window.



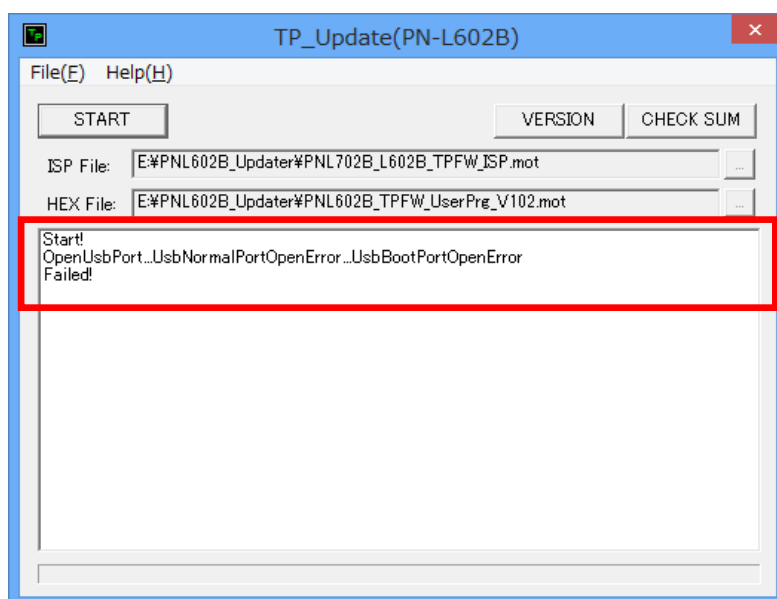
3. Click [START] button and the writing operation of the touch panel firmware will start.

(Caution) Please do not unplug USB cable during writing operation.

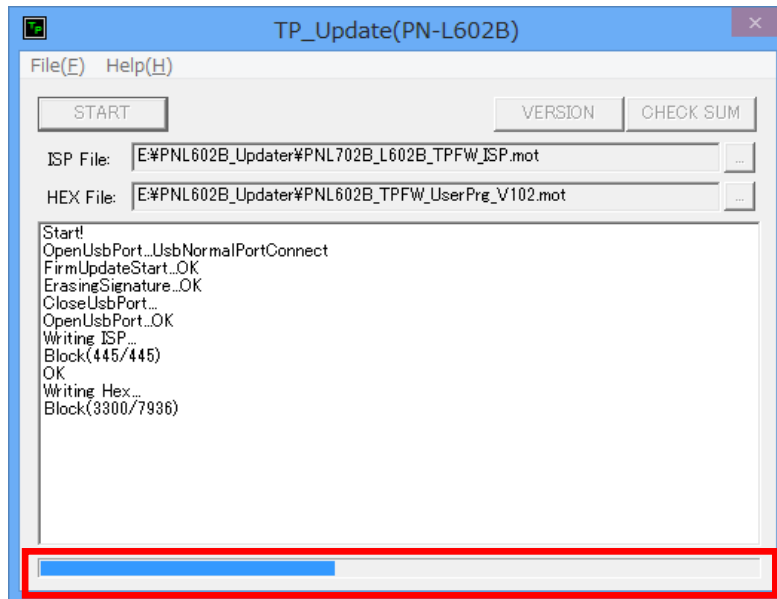


In case of incorrect models are connected:

When you click [START] button with other models are connected, the error message [OpenUsbPort...UsbNormalPortOpenError UsbBootPortOpenError”] is displayed as an image below. In this case, connect the USB cable of the correct model’s touch panel, and click [START] button again.

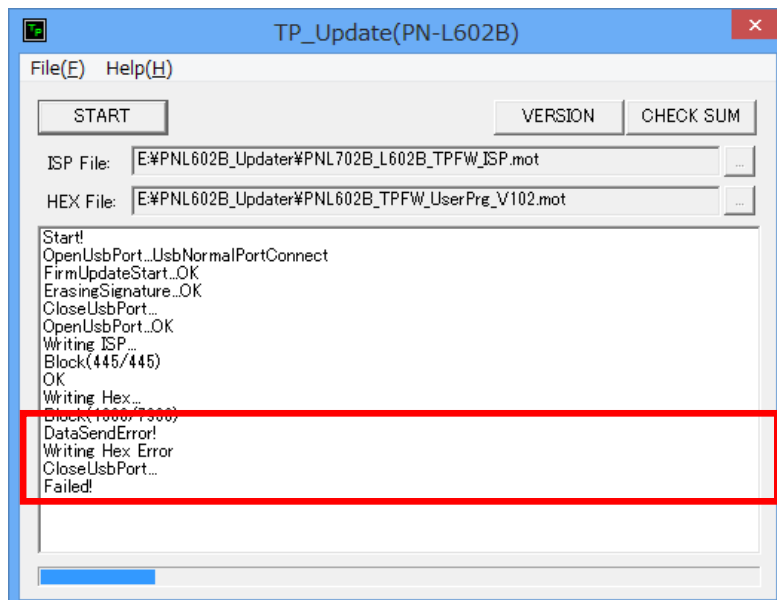


4. The progress is displayed during writing of touch panel firmware.

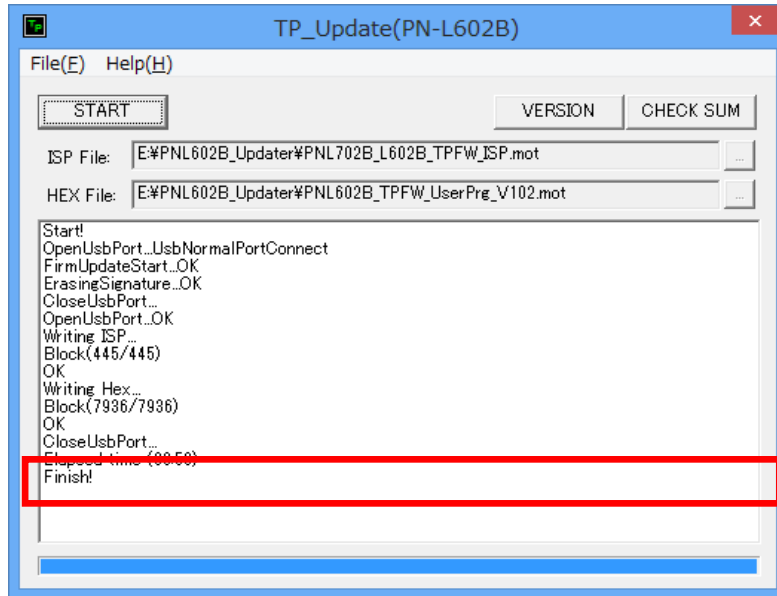


In case of an error is occurred during rewriting:

If USB connector is unplugged during rewriting, “Failed!” is displayed as the image below. In this case, unplug USB connector once, and then connect it again. Next, click [START] button and writing operation is restarted.



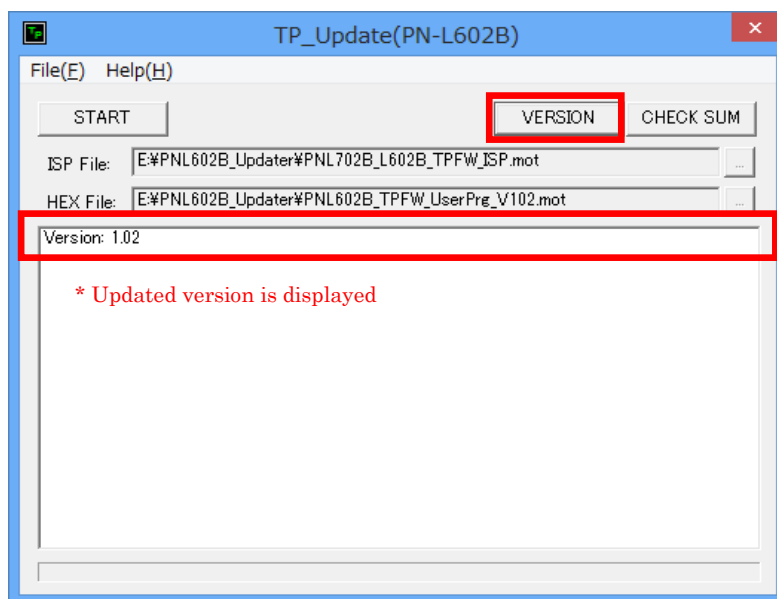
5. When writing operation is correctly finished, the following screen and “Finish!” are displayed.



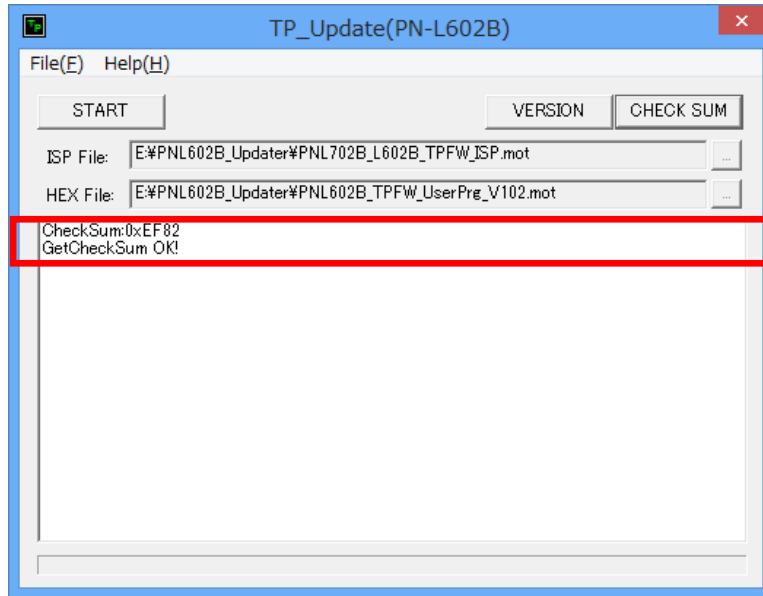
6. After updating a version of the firmware, the new version firmware can be operative when USB connector is unplugged once and it is connected again.

At this moment, it is not necessary to restart the display.

7. Updated version is displayed when [VERSION] button is clicked.



8. “GetCheckSum OK!” is displayed by clicking [CHECK SUM] button when the touch panel firmware is correctly updated.



“GetCheckSum *** NG” is displayed when the touch panel firmware is not updated correctly. In this case, unplug USB connector once and connect it again. Next, click [START] button and then rewriting is started again.

9. Finish the program by clicking [X] button on the upper right of the updating tool.

